



# **Background Information of the New Jersey Appeal of Summer Flounder Addendum XXVII**

ISFMP Policy Board

May 2017

# Appeal Process



- Appeal is reviewed by Commission Leadership within 15 business days
  - Current Chair and Vice-Chair and Past Chair
- Appeal must be justified with the following criteria:
  - Decision not consistent with FMP
  - Failure to follow process
  - Insufficient/inaccurate/incorrect application of technical information
  - Historical landings period not adequately addressed
  - Management actions resulting in unforeseen circumstances/impacts

# Addendum XXVIII



- Approved for Public Comment December 2016
- Addressed the decrease in the 2017 RHL to account for the declining SSB
- Addendum proposed measures to meet the 2017 RHL
- Error found in the document prior to the February Board meeting
  - Errors recognized by the board chair prior to considering the document for approval
- Implementation March 1

# New Jersey Appeal



## Criteria 2: “Failure to follow process”

- Inaccuracies in Draft Addendum XXVIII Subject to Public Comment

# Rejected Claims



## Criteria 2: “Failure to follow process”

- Failure to Include Enhanced Opportunity Shore Fishing Program in Draft Addendum XXVIII
- Failure to Properly Consider Public Comments

# Rejected Claim



Criteria 3: Insufficient/inaccurate/incorrect application of technical information

- Variability and Untimeliness of MRIP Data Not Appropriate for Yearly Management Approach

# Rejected Claims



Criteria 5: Management actions resulting in unforeseen circumstances/impacts o Increase in Fishery Resource Waste

- Disproportionate Removal of Larger Breeding Females
- Unfairness & Inequity Among Member States
- Failure to Consider Economic and Social Impacts
- Compliance and Data Collection Issues

# Summer Flounder Board Action



- Board recommended to the ISFMP Policy Board New Jersey be found out of compliance for failing to implement the measures of Addendum XXVIII
- NJ brought a conservation equivalency proposal to the board for consideration yesterday
- The Board tasked the TC to review the proposal to be followed by Board consideration



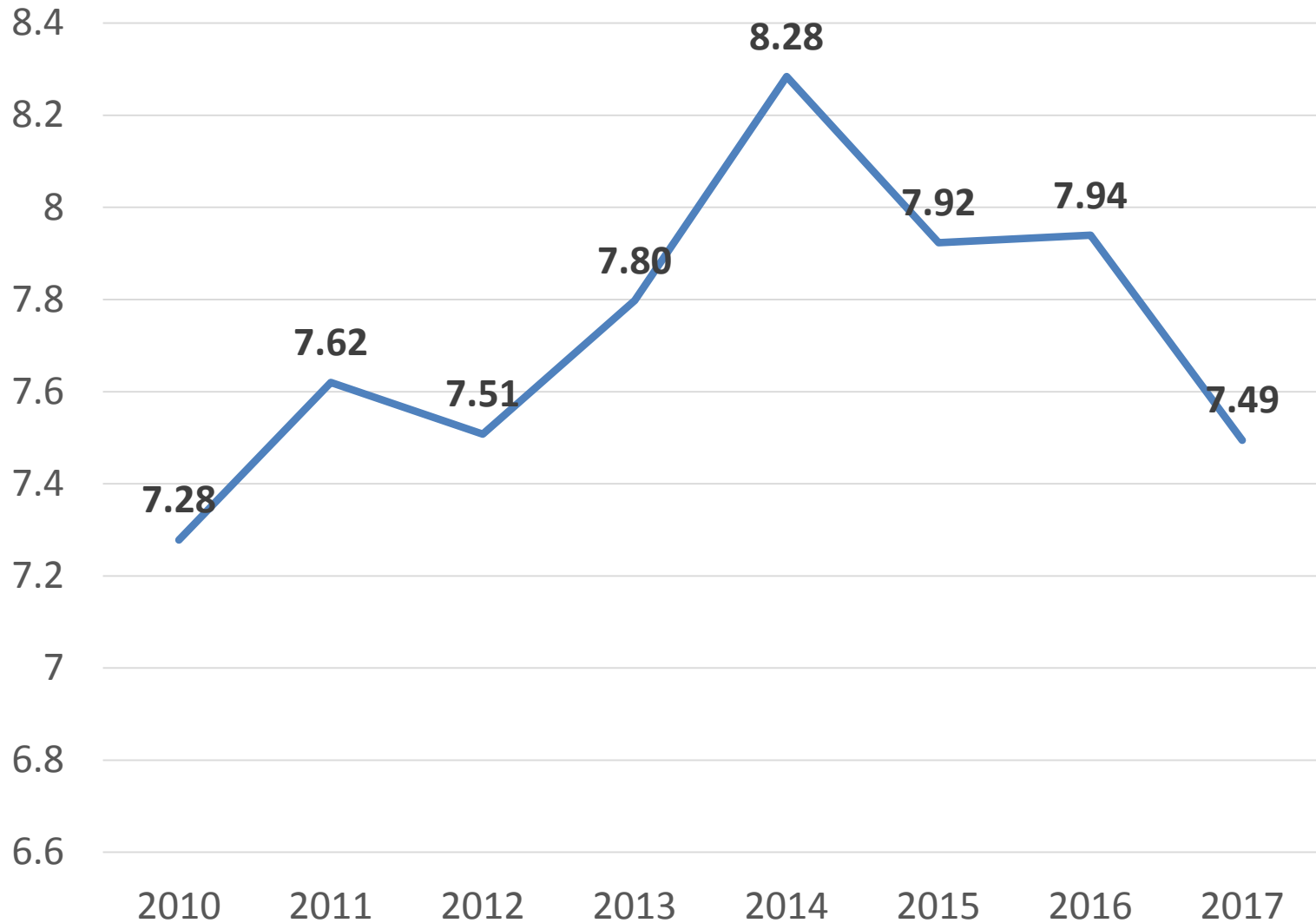


# **Commissioner Survey Results**

ISFMP Policy Board

May 11, 2017

# Average Satisfaction - All Questions



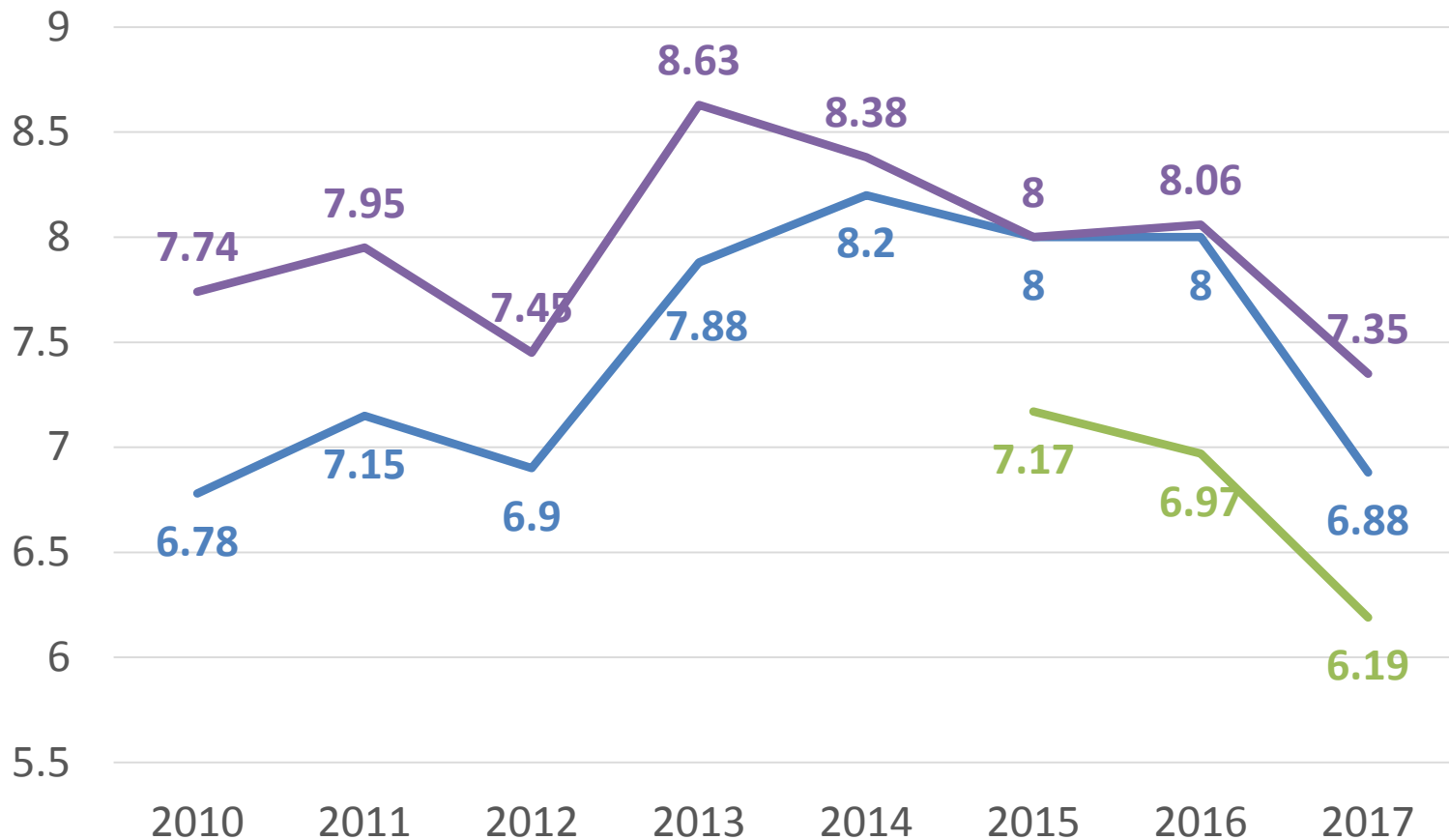


# Largest Drop in Satisfaction

Q3 Commissioner cooperation (-1.12)

Q9 Managing rebuilt stocks (-0.78)

Q12 Reacting to new information (-0.71)



# Themes from Comment Section

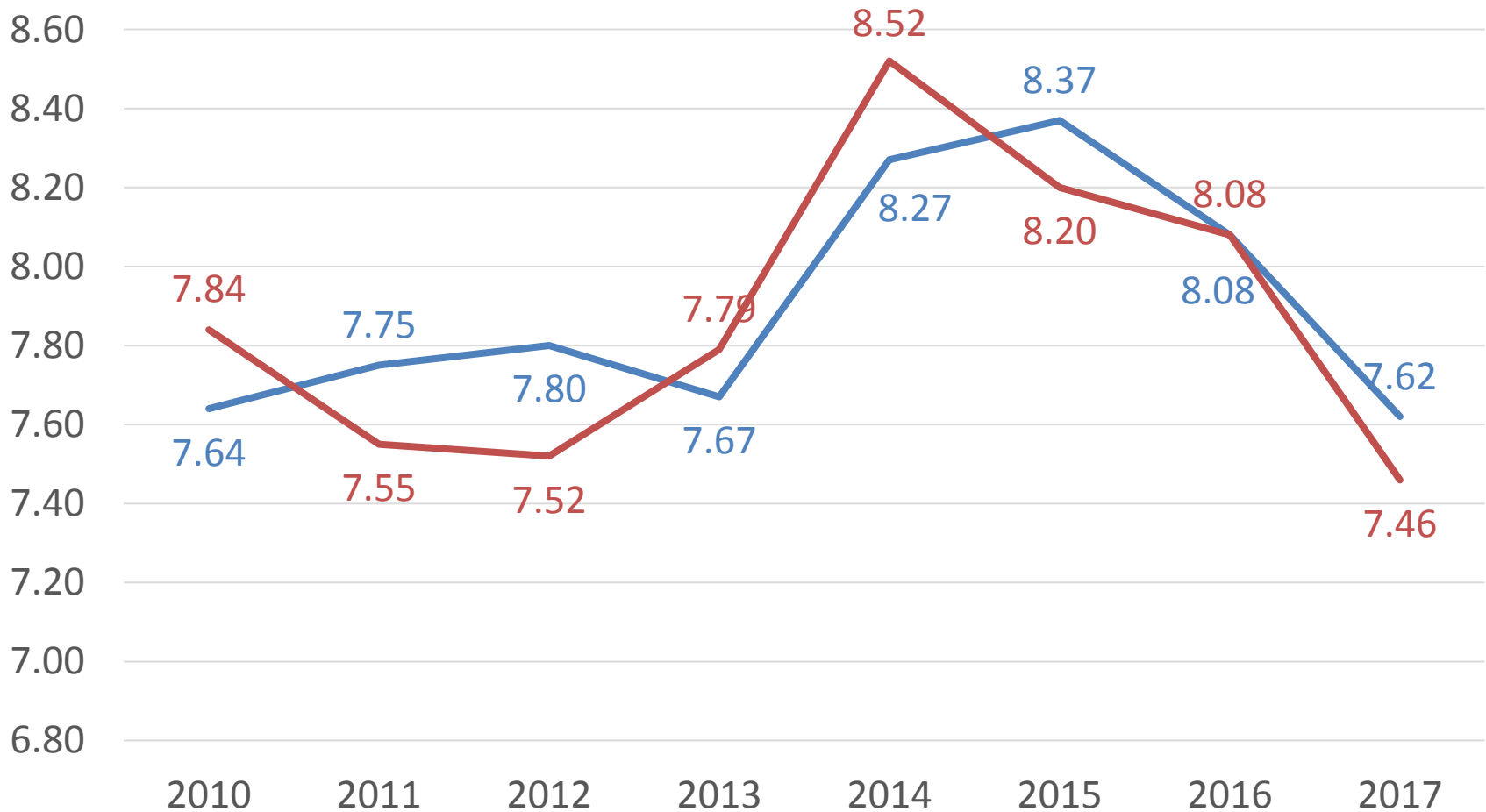


1. Climate change impacts
2. Individual state interests over coast as a whole
3. Socioeconomics analysis
4. Scarcity of fiscal resources
5. Data deficiency impacts
6. Meeting Week Agenda



Questions?

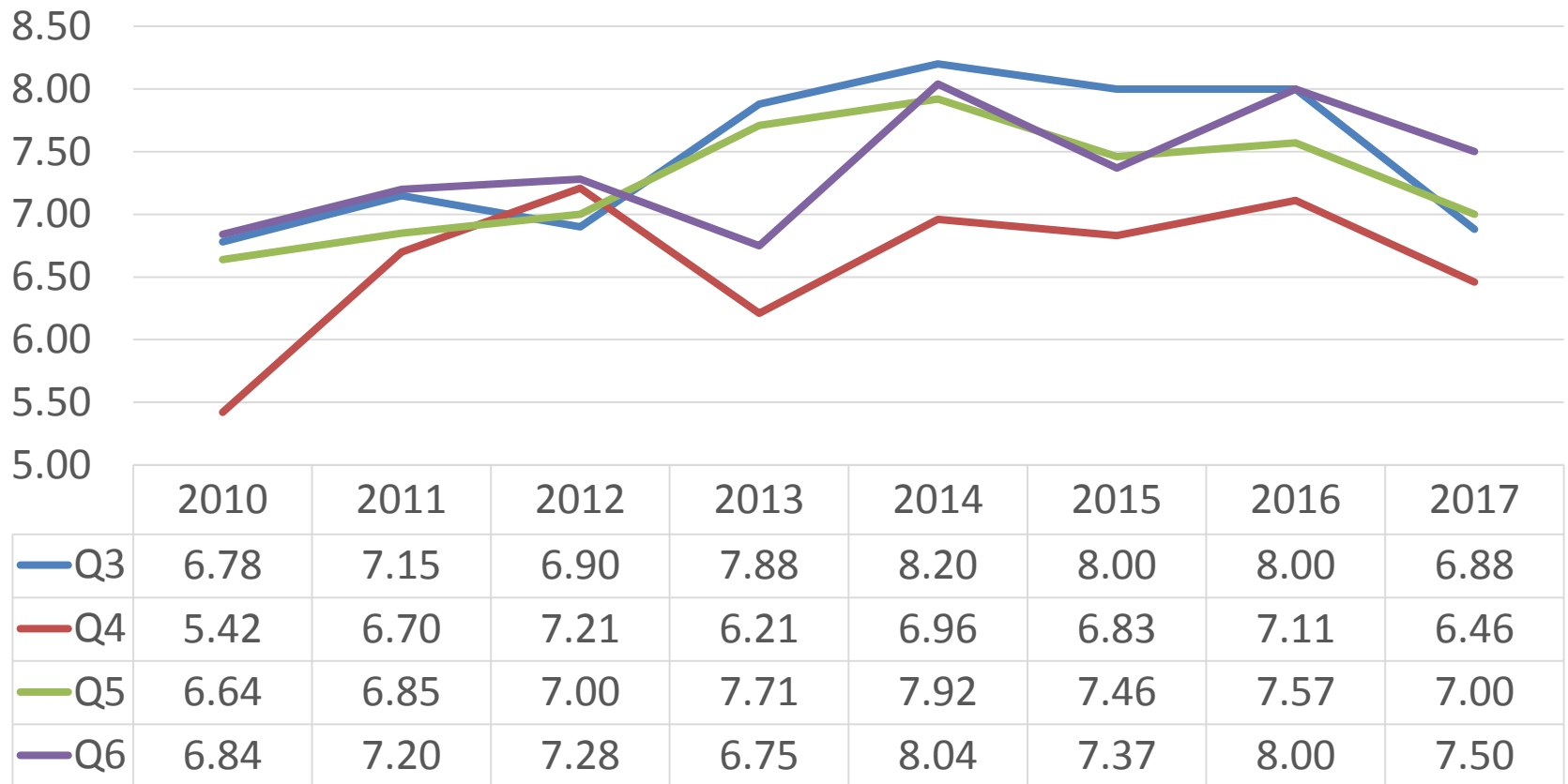
# Progress Toward Achieving Vision



1. Clear and achievable plan to achieve Vision
2. Progress toward Vision



# Execution and Results



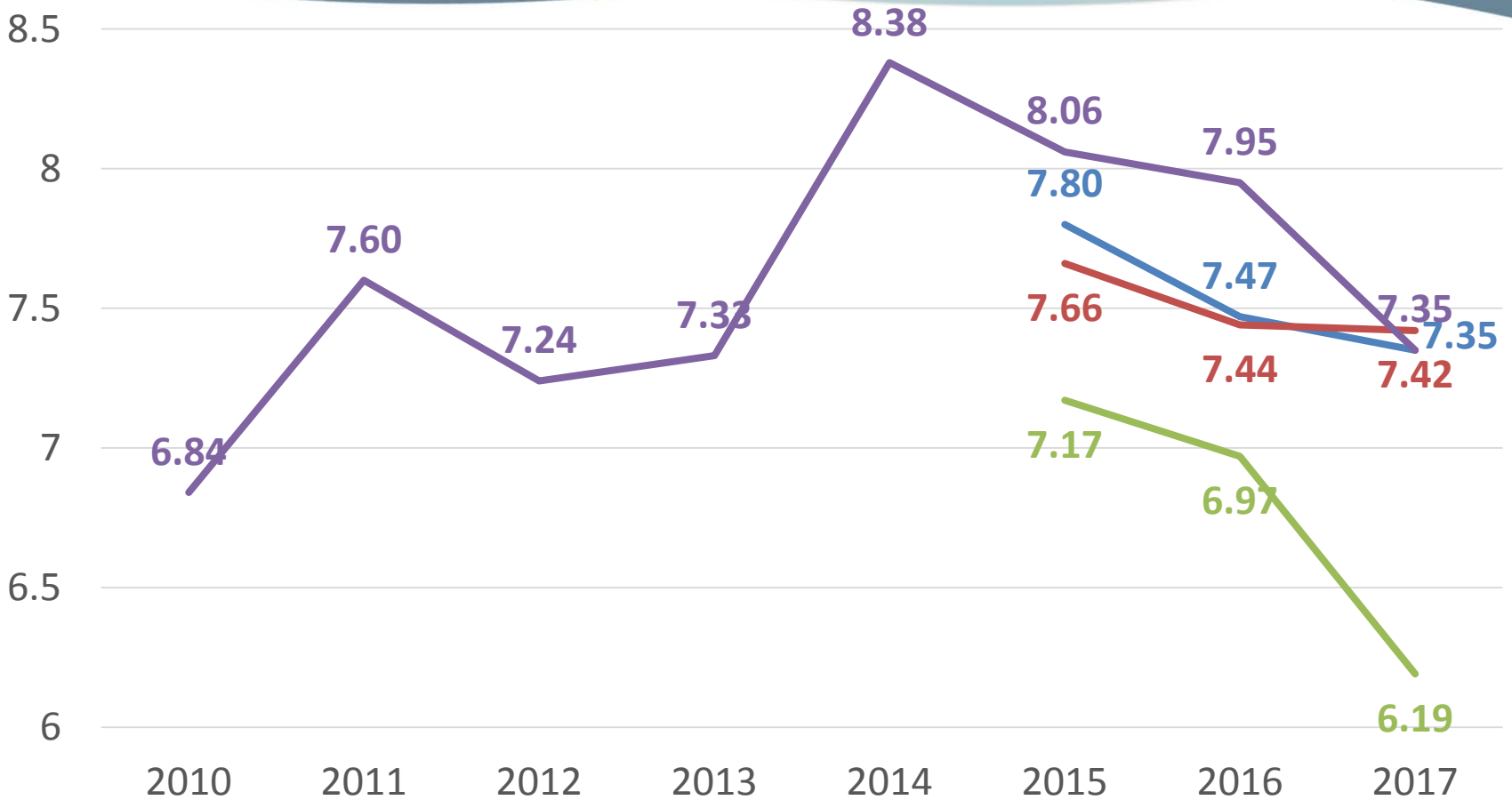
3. Cooperation between Commissioners

4. Cooperation with federal partners

5. Relationship with commercial, recreational, environmental stakeholders

6. Securing fiscal resources

# Progress and Results

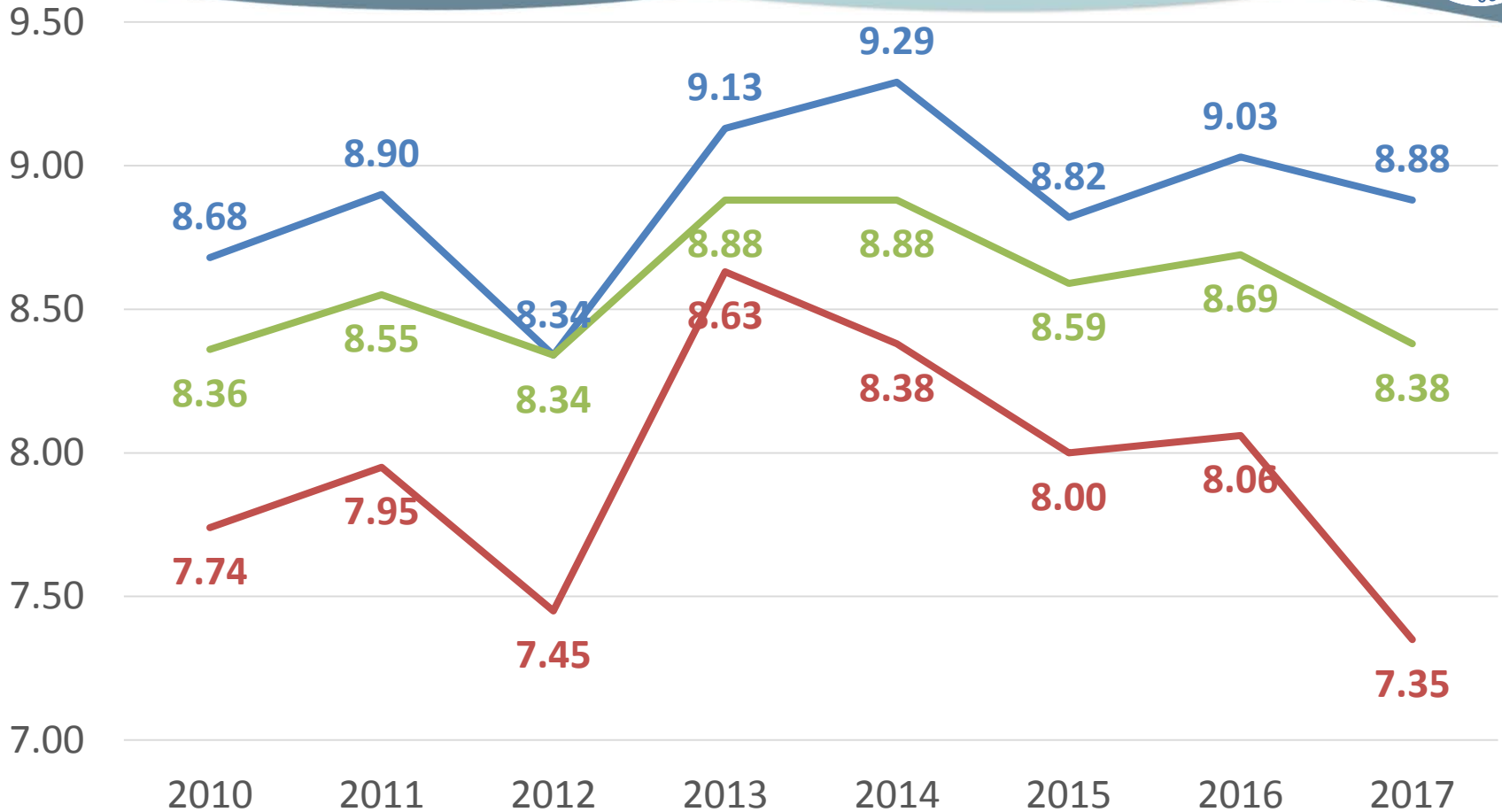


- 7. Overfishing no longer occurring as a measure of progress
- 8. Progress to end overfishing
- 9. Ability to manage rebuilt stocks
- 10. Engagement with state legislators and members of Congress





# Utilization of Resources

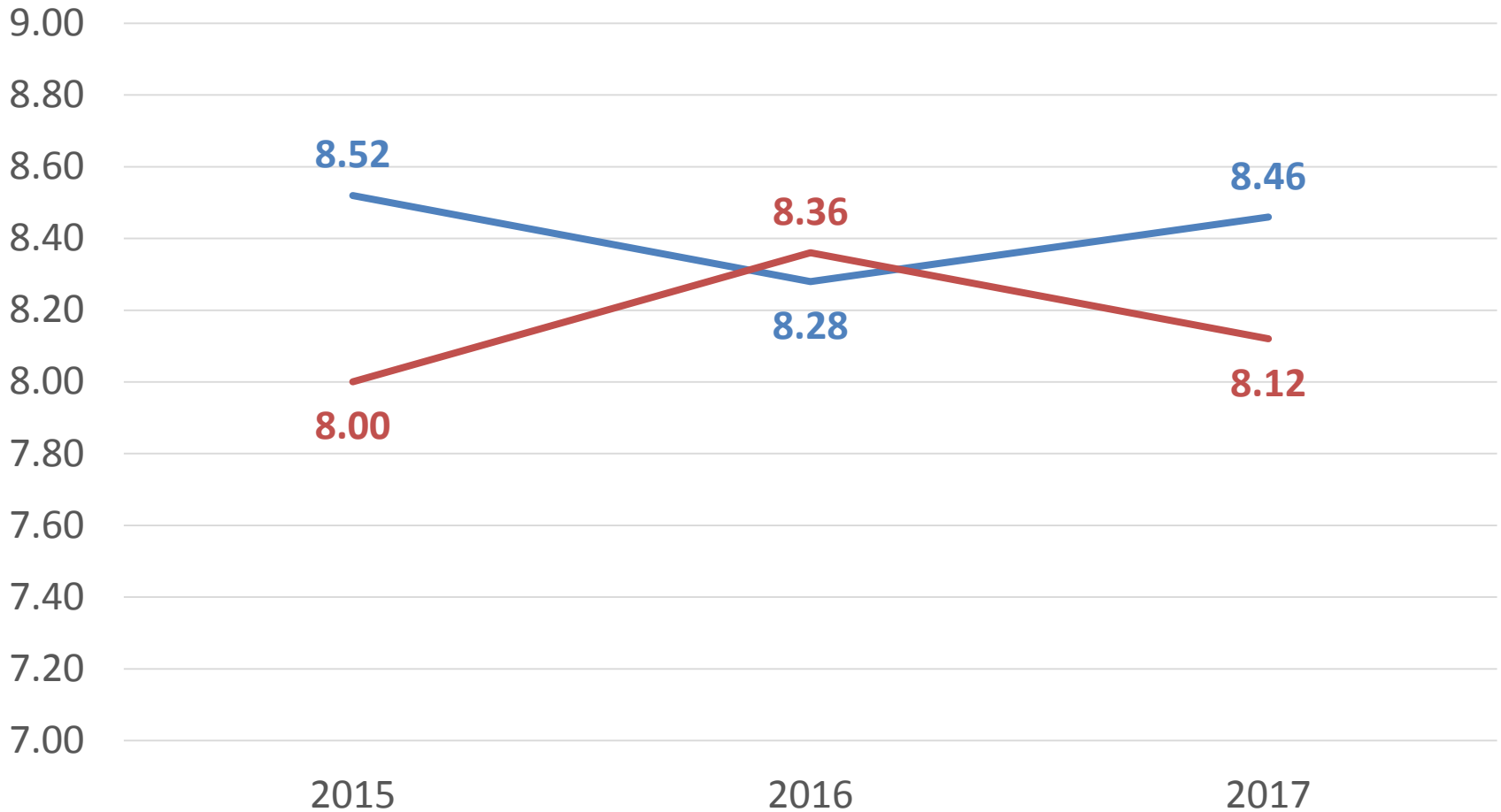


11. Utilization of fiscal and human resources

12. Reacting to new information

13. Appropriateness of resources spent on issues within our control

# ISFMP, Science Program Products



14. ISFMP products

15. Science Program products



# **Safe Harbor Working Group: Addressing Landings associated with Safe Harbor**

# Working Group



- **Working Group draft an informational document for states considering a policy regarding safe harbor and landings due to safe harbor circumstances.**
- **This is not a policy/requirement for states to implement.**

# Safe Harbor



- **Safe Harbor Provision: a port will not reject any deserving, damaged or needful vessel.**
- **This guidance is not intended to disregard other circumstances that may prevent a vessel's entry to a state port.**



**Vessels seek harbor in a state under the following declared circumstances:**

- **Mechanical Breakdown**
- **Unsafe Weather Conditions**
- **Loss of Essential Equipment**
- **Medical Emergency**

# Vessel Are Asked To:



- **Identify the vessel captain's name and vessel name;**
- **Identify the home state in which they are licensed to commercially fish;**
- **Describe the nature of the problem;**
- **Identify the port they intend to enter and the approximate time of arrival;**
- **Verbally declare the type and amount of fish on board; and**
- **Provide a call back phone number or other method of contact.**

# Landing Quota in Another State



- **Vessels without a license to land in the state it has sought safe harbor should not be allowed to offload fish unless it is determined necessary to stay in port for a period which would result in the fish on board becoming unmarketable.**
- **A vessel could not offload unless it has been authorized to do so from the host state.**



# Communication Between States



- **The host state should communicate with the vessel's home state to discuss quota transfers prior to allowing offloading.**
  - **Determine the home state trip limit**
  - **Who would cover trip limit overages**
  - **What is the necessary documentation to complete the transfer.**
  - **A packout slip to confirm landings**

# What States Are Doing Now



- **Only land the trip limit of the host state**
- **Fish beyond the host state trip limit is forfeited to a food bank or similar charity**
- **Authorization to offload is limited according to the willingness of the vessel's home state to accept the fish under that state's fish allocation.**
- **Not grant permission for vessels to land quota in another state due to weather conditions but do allow for other safe harbor provisions.**

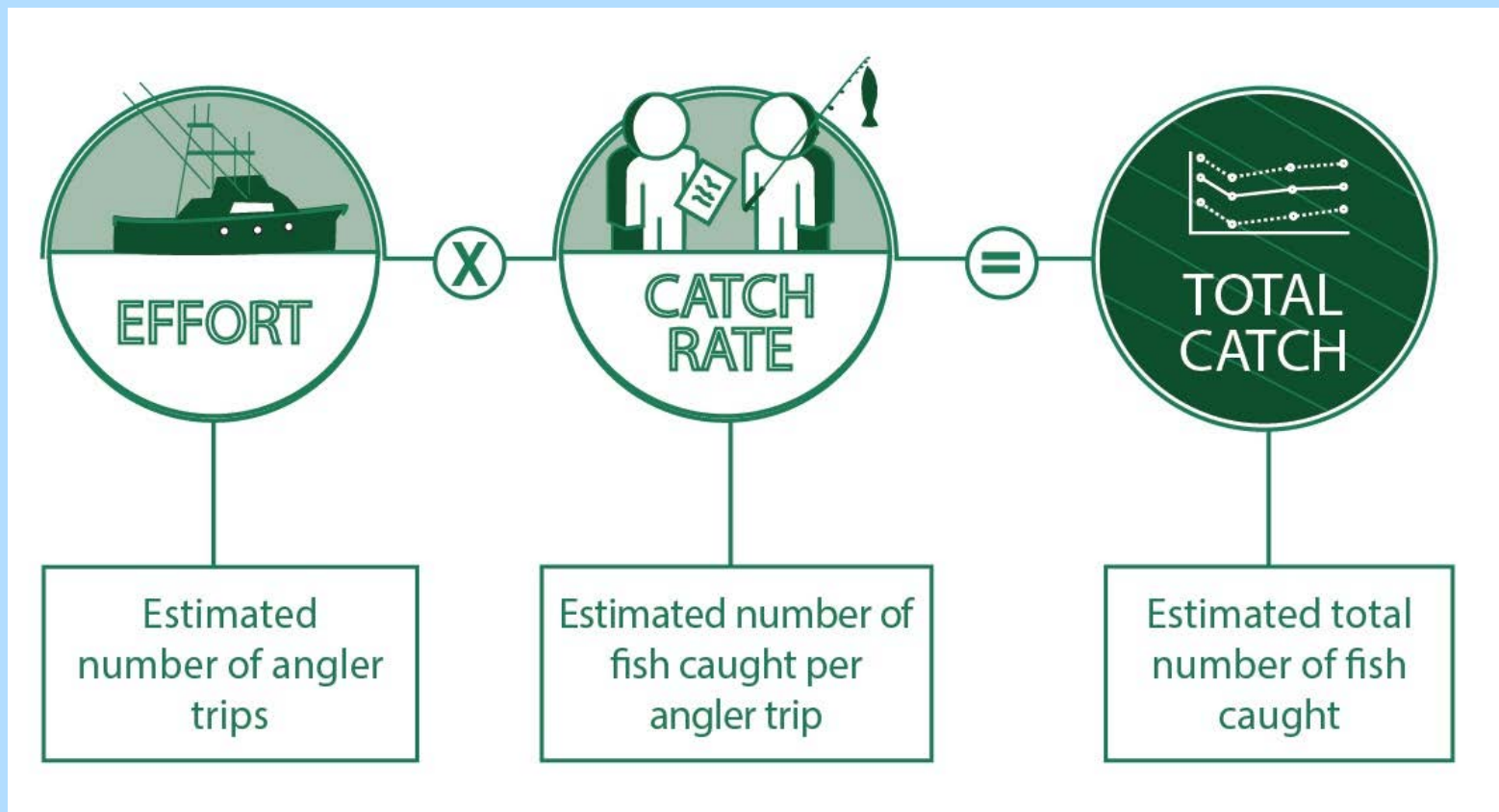


**NOAA  
FISHERIES**

# Marine Recreational Information Program Update

Dave Van Voorhees, Ph.D.  
ASMFC Policy Board Meeting  
May 11, 2017

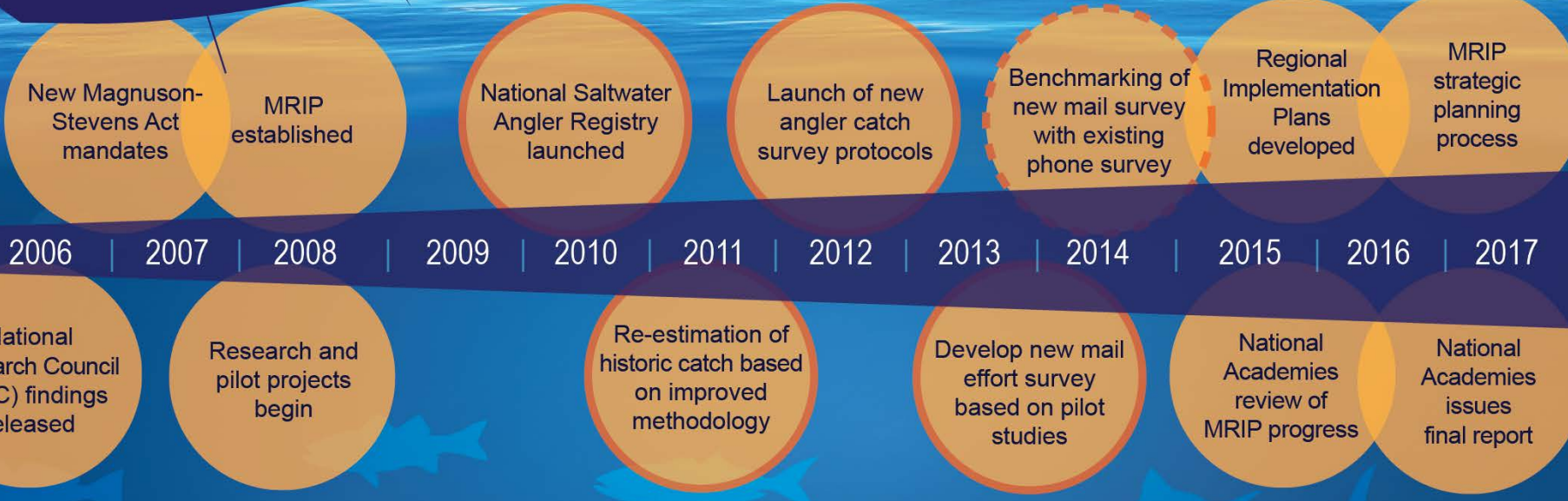
# Estimating Recreational Fishery Catch



Supporting NOAA's mission of ensuring productive, sustainable fisheries and vibrant fishing communities through science-based decision-making.

# MRIP MILESTONES

Marine Recreational Information Program



- Milestone
- Milestone in response to NRC guidance (*completed*)
- Milestone in response to NRC guidance (*in progress*)

# National Academies Review

- Collection of recreational fishery data is difficult - advanced survey methods and complex statistical analyses needed
- MRIP has made “impressive progress”
  - Major improvements in statistical soundness of survey designs
  - Progress made in evaluating/testing use of new technologies
  - Surveys conducted in cooperation with interstate commission and state agency partners
  - Very responsive to regional and state needs
  - Improved communications with partners and stakeholders
- Additional challenges do remain

# Access Point Angler Intercept Survey

## Key Takeaways

- National Academies: “The new APAIS design is a substantial improvement on the MRFSS intercept survey methodologies.”
- We’ve greatly reduced potential for bias:
  - Strict adherence to formal probability sampling protocols.
  - Decision-making by samplers greatly limited
  - Expanded temporal coverage of daytime/nighttime fishing
  - Site-time assignments completed without rescheduling
- State agency staff now conduct field sampling in all Atlantic and Gulf Coast states covered by the APAIS



# New Fishing Effort Survey (FES)

## Key Takeaways

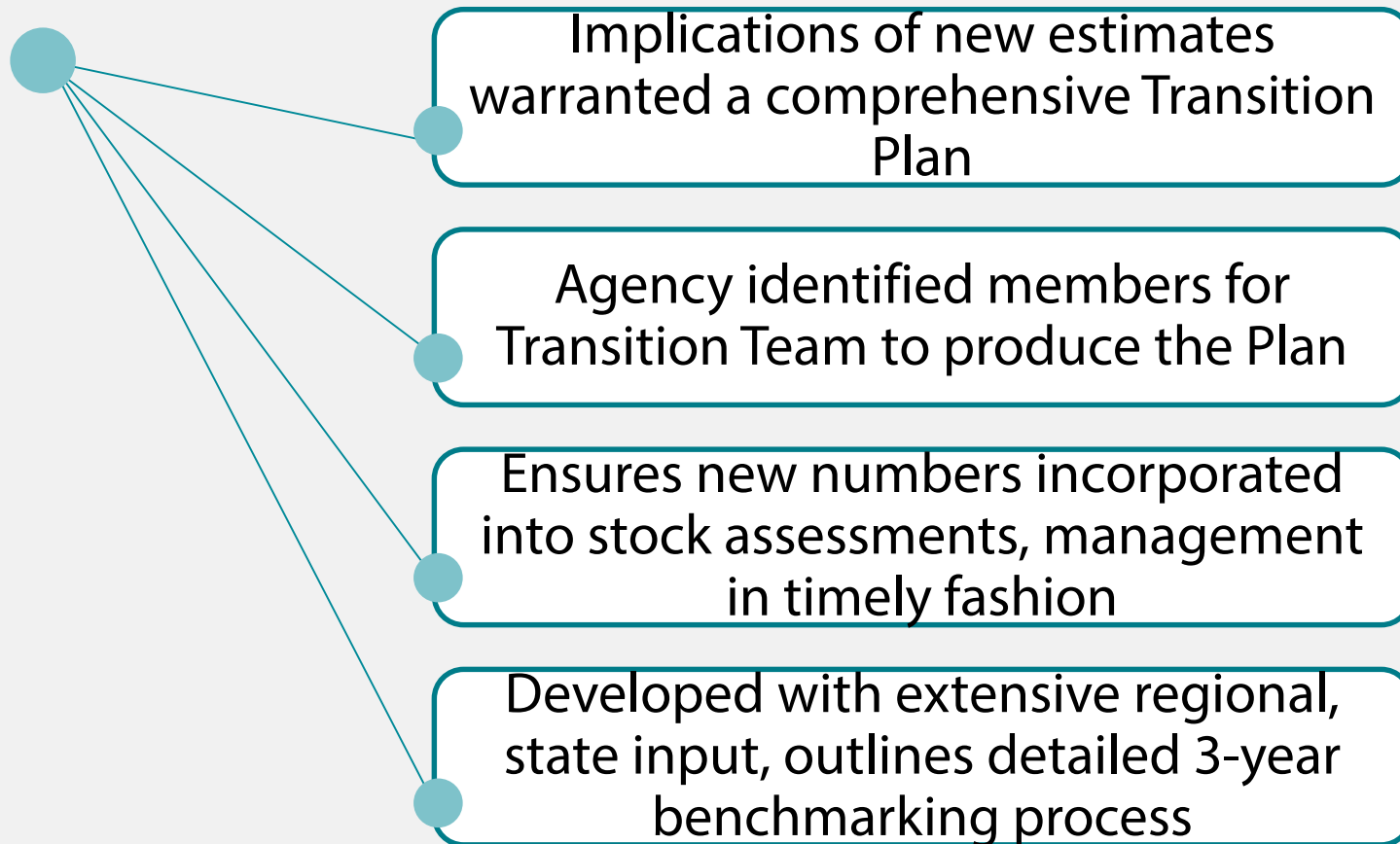
- National Academies: “The methodologies, including the address-based sampling survey design, are major improvements from the original Coastal Household Telephone Survey that employed random-digit-dialing.”
- This mail survey is a *more accurate* method for estimating shore and private boat fishing effort on the Atlantic and Gulf Coasts.
  - Better coverage
  - Higher response rates
  - Better chance of reaching people who fished
- In pilot studies the FES produced considerably *higher estimates* of fishing effort than the telephone survey.



# Transitioning to New Surveys

- Immediate implementation of the new FES would cause a major disruption
  - Stock assessments and fisheries management rely on having a comparable time series of recreational catch statistics
  - A calibration is needed to convert historical catch estimates based on legacy surveys into estimates compatible with those produced by any new surveys
  - We need numbers in the same “currency”
- Calibrations are needed to account for both the new FES and the recent change in the APAIS design

# Transition Plan



# Transition and Calibration Timeline

## Step 1

2015-2017

- FES/CHTS Benchmarking

## Step 2

2016-2017

- FES calibration model development
- FES calibration model peer review
- APAIS calibration model development

## Step 3

2018

- APAIS final calibration model peer review
- Re-estimation of historical catch and effort

## Step 4

mid-2018

- Calibrated catch and effort time series available for use in stock assessments and management

- **Three-year transition period** from current phone survey estimates to new mail survey estimates
- **Phone survey estimates will be used for science and management** until the calibration models are developed, peer-reviewed, adopted and used to update stock assessments and annual catch limits
- Plan **developed with extensive regional and state-level input** through Atlantic and Gulf subgroup of the Transition Team

# For-Hire Data Collections

- **Ultimate Goal:** Develop and certify designs for for-hire electronic trip reporting programs
- Currently we utilize a combination of methods:
  - For-Hire Telephone Survey
  - Northeast Vessel Trip Reports
  - Access-Point Angler Intercept Survey
- We are supporting development and testing of alternative methods that include:
  - Electronic logbook reporting
  - Compliance monitoring
  - Dockside sampling for validation

# MRIP Next Steps

1

- Complete strategic plan for MRIP

2

- Respond to new National Academies review

3

- Transition to the new mail survey of fishing effort by 2018

4

- Expand outreach efforts

5

- Complete regional implementation plans and rely upon them to establish priorities for research and execution

6

- Continue MRIP's broad range of research and pursue regional implementation of improved methods



**NOAA  
FISHERIES**

# Questions & Discussion



**NOAA FISHERIES**