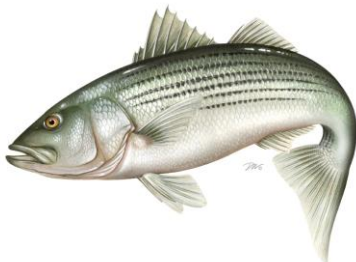
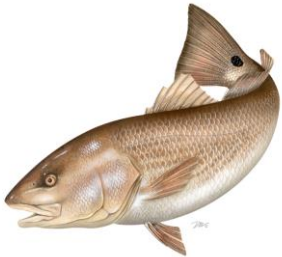
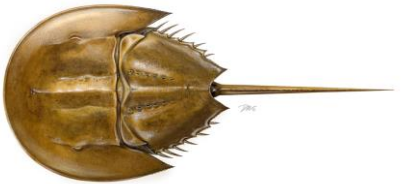


## STOCK ASSESSMENT OVERVIEW



Beginning in 2010, staff began preparing overviews of species benchmark stock assessments with the intent of aiding media and interested stakeholders in better understanding the Commission's stock assessment results and process.

Stock assessment overviews for American eel, Atlantic croaker, Atlantic menhaden, black drum, horseshoe crab, red drum, river herring, striped bass and tautog follow.