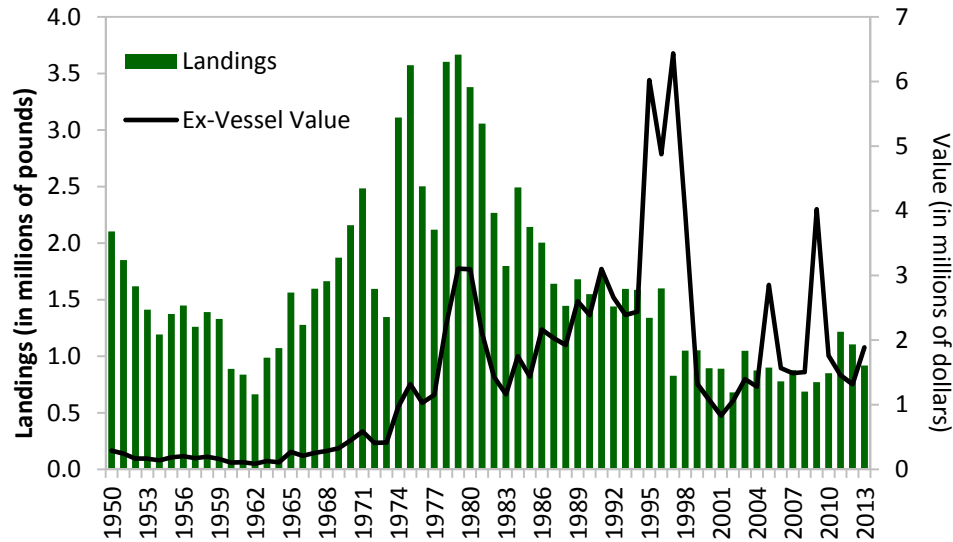


## Overview of Stock Status American Eel, *Anguilla rostrata*

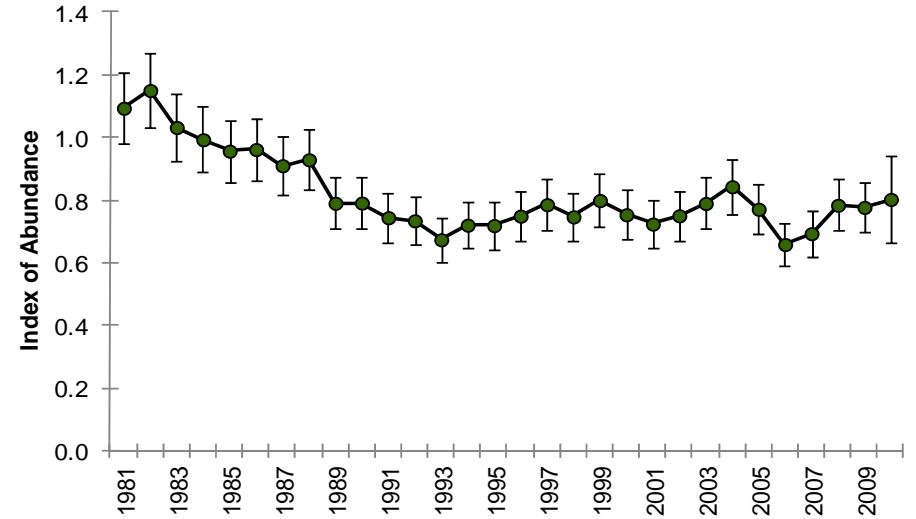
### American Eel Total Commercial Landings and Value

Source: 2012 American Eel Benchmark Stock Assessment Report (2012),  
ASMFC State Compliance Reports & NMFS Fisheries Statistics Division, 2014



### 30-Year Index of Abundance for Yellow-phase American Eels along the Atlantic Coast (error bars represent standard errors about the estimates).

Source: ASMFC American Eel Benchmark Stock Assessment Report, 2012



**Timeline of Management Actions:** FMP (1999); Addendum I (2006); Addendum II (2008), Addendum III (2013); Addendum IV (2014)

#### Management Considerations:

**Condition:** Depleted (2012 Benchmark Stock Assessment Report).

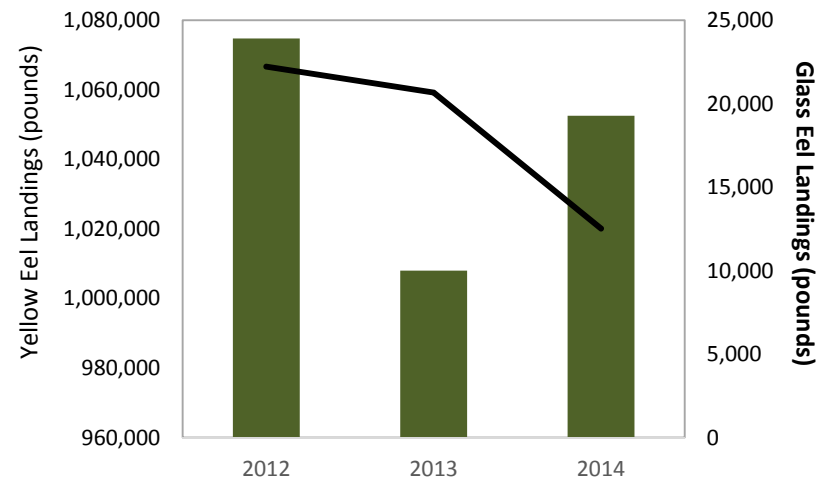
**FMP Stock Rebuilding Goals:** Protect and enhance the abundance of American eel in inland and territorial waters of the Atlantic states and jurisdiction and contribute to the viability of the American eel spawning population and provide for sustainable fisheries by preventing overharvest.

#### **FMP Status:**

FMP approved in 2000, implemented in 2001. Addendum I, approved in 2006, required mandatory reporting of catch and effort data. Addendum II, approved in 2008, advocates for increased emphasis on improving upstream and downstream passage for American eel.

### American Eel Landings by Fishery

Source: ASMFC State Compliance Reports, 2015



## **Overview of Stock Status**

### **American Eel, *Anguilla rostrata***

Addendum III (August 2013) and Addendum IV (October 2014) seek to reduce mortality and increasing conservation of American eel stocks across all life stages. Addendum III establishes new management measures for both the commercial (glass, yellow, and silver) and recreational eel fisheries, and implements fishery-independent and fishery-dependent monitoring requirements. Addendum IV establishes a 907,671 pound coastwide quota for yellow eel fisheries, reduces Maine's glass eel quota to 9,688 pounds (2014 landings), and allows for the continuation of New York's silver eel weir fishery in the Delaware River.

**Primary Management Measures:** Recreational fisheries are managed by minimum size limits and possession limits. Commercial fisheries are managed by quotas.