



Atlantic States Marine Fisheries Commission

NEWS RELEASE

Working towards healthy, self-sustaining populations of all Atlantic coast fish species, or successful restoration well in progress by the year 2015

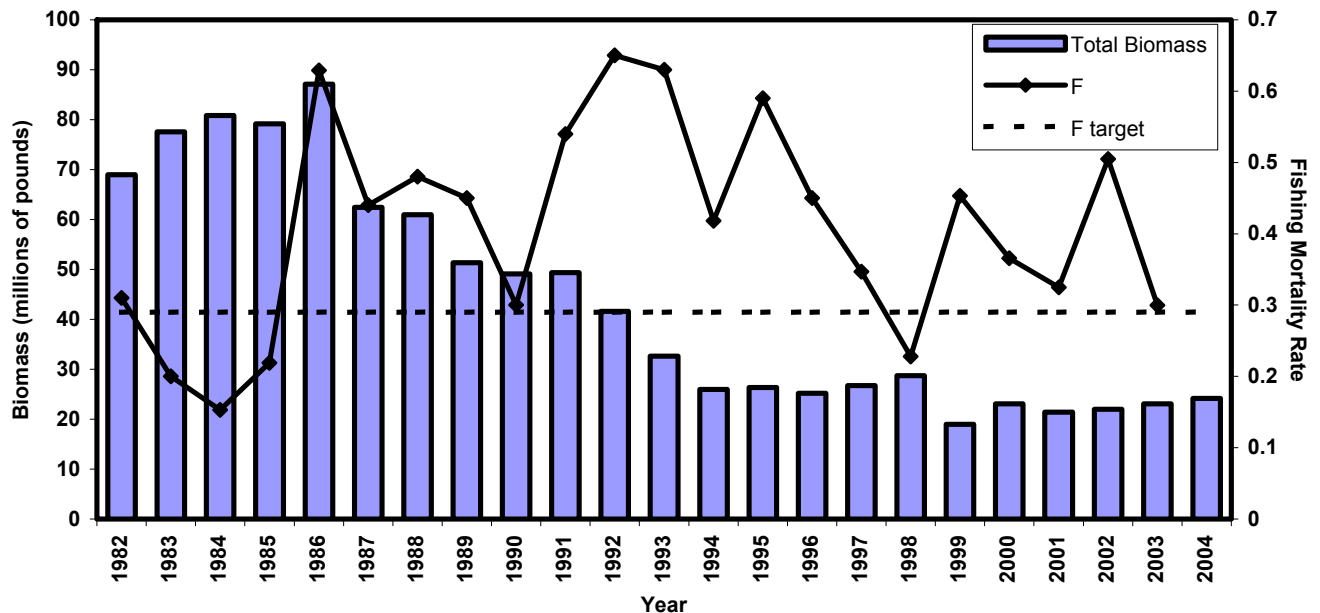
FOR IMMEDIATE RELEASE
February 21, 2006

PRESS CONTACT: Tina Berger
(202) 289-6400

Tautog Stock Assessment Indicates Abundance Remains at Low Levels and Overfishing is Occurring

Arlington, VA – The 2006 peer-reviewed stock assessment report indicates the tautog resource continues to be at low biomass levels. Since the mid-1980s tautog has undergone a substantial decrease in biomass and remains at a low level of abundance. Total stock biomass has been stable since 1999. Since the plan does not define a specific biomass target, it cannot be determined if the population is overfished. With the 2003 fishing mortality rate of 0.30 exceeding the plan target of 0.29, the stock assessment concluded that overfishing is occurring.

Tautog Total Biomass and Fishing Mortality
Source: ASMFC Tautog Stock Assessment Report, 2006



FMP Milestones: Original FMP (1996); Addendum I (1997); Addendum II (1999); Addendum III (2002)

The Atlantic States Marine Fisheries Commission was formed by the 15 Atlantic coastal states in 1942 for the promotion and protection of coastal fishery resources. The Commission serves as a deliberative body of the Atlantic coastal states, coordinating the conservation and management of nearshore fishery resources, including marine, shell and anadromous species.

The Peer Review Panel concluded that the coastwide assessment currently provides the best available scientific foundation for management. Beyond receiving the stock assessment and Peer Review Panel reports, the Board took no management action at this meeting. By March 1, both reports can be obtained via the Commission's website at www.asmfc.org under Breaking News or by contacting the Commission office at (202) 289-6400. For more information, please contact Lydia Munger, Fisheries Management Plan Coordinator, at lmunger@asmfc.org or (202) 289-6400.